

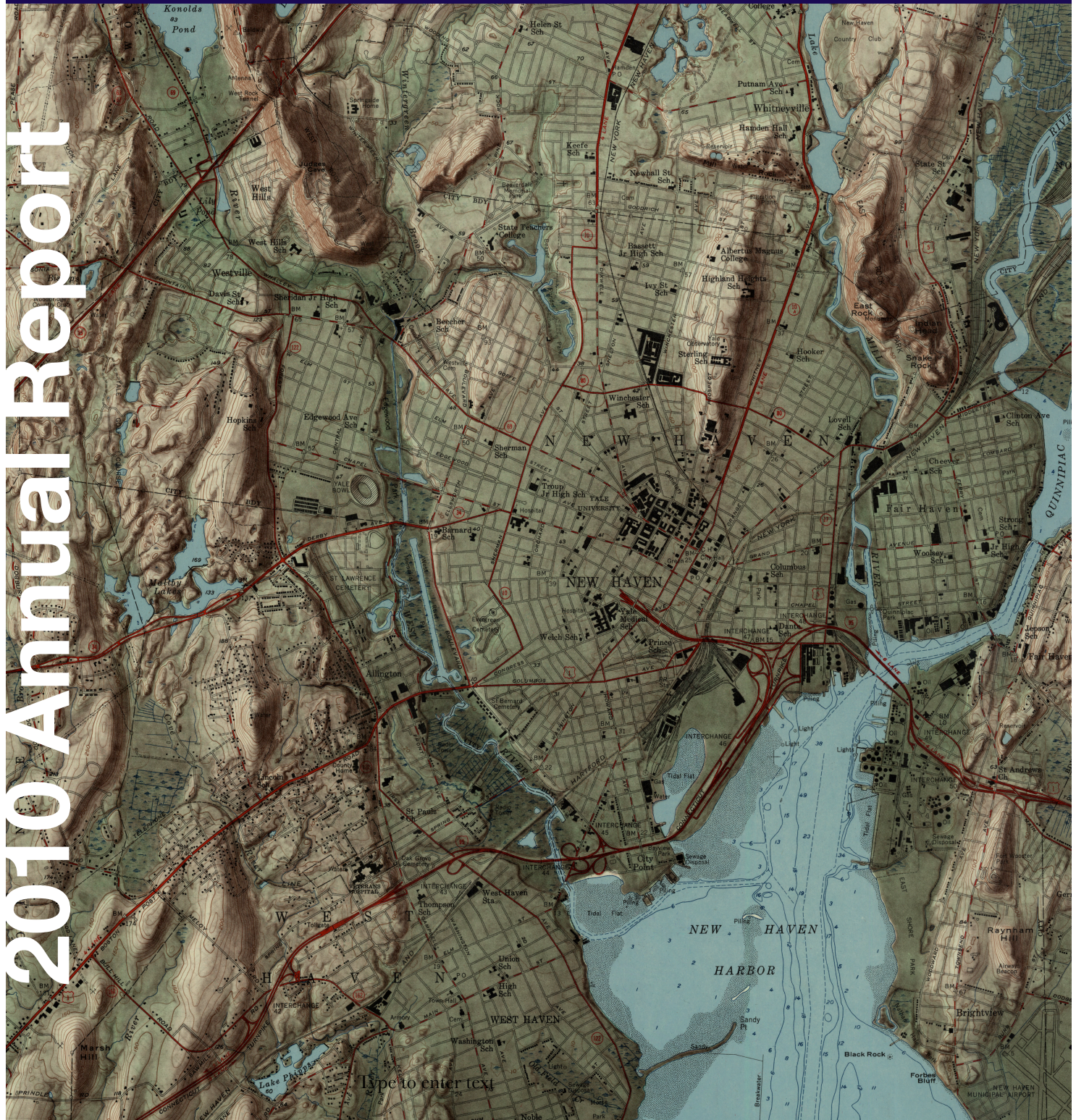


University of
Connecticut

University Libraries

Map and Geographic Information Center

2010 Annual Report



Digitizing the Past to
Empower 21st Century Research



The Year in Review

2010 by the Numbers

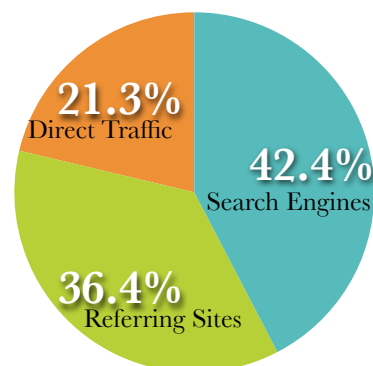
2010 was a year marked by a significant shift in providing user access to maps and aerial photography in full-quality TIFF format. The usage totals for 2010 provide clear evidence of the shift to increased usage of Flickr to discover MAGIC's historic maps. Included below are highlights from 2010.

Keywords

Included below are the most frequent keyword searches and keywords leading to MAGIC from a search engine.

Rank	MAGIC Website Keywords		Search Engine Keywords	
1	Hartford	▲	UConn MAGIC	unch
2	Tolland	▲	MAGIC UConn	▲
3	New London	▲	sid file	▼
4	New Haven	▲	.sid file	▲
5	Connecticut	▼	UConn Map	▲
6	Fairfield		CT GIS	▲
7	Newtown		sid files	▼
8	Danbury		Connecticut GIS data	
9	Norwalk		UConn Maps	
10	Waterbury		UConn MAGIC Maps	

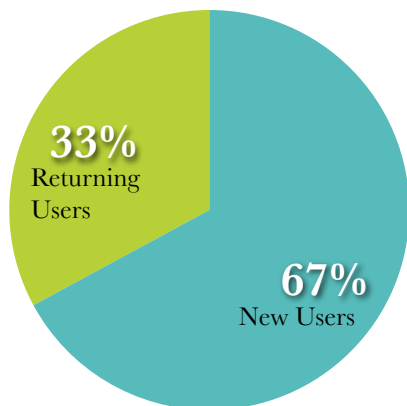
Traffic Sources



Most Frequently Visited

Rank	Pages Visited	
1	Homepage	unch
2	Connecticut GIS data	▲
3	Historical Maps	▼
4	Aerial Photos	▲
5	SID Help Page	▼

New & Returning Visitors



MAGIC Website Quick Facts

Time on MAGIC's website: 3:17 minutes
 Number of Visits: 128,554
 Number of Page Views: 197,327
 Number of Average Page Views: 3.22 pages
 Number of Countries: 148 Countries
 MAGIC 2.0 Online Maps Visits: 15,234

MAGIC's Blogs

Outside the Neatline Visits: 4,587 ▲
 MAGIC News & Updates Visits: 761 ▼

Flickr Historical Maps

Flickr Map Views: 130,913 (255% increase from 2009)
 Most Frequently Viewed Map: 2,326

Web Content Views Total



281,283

(Flickr, Facebook, MAGIC 2.0 Online Maps, MAGIC Website, and MAGIC's Blogs)

40.2%

On the Line:

An NEH-Funded Grant Partnership with Trinity College

by Jack Dougherty

During the 2010-11 academic year, MAGIC was awarded a \$100,800 grant from the National Endowment for the Humanities (NEH) to support collaborative digital research with Jack Dougherty, Associate Professor of Educational Studies at Trinity College in Hartford. Together, MAGIC staff and Dougherty are creating interactive historical maps for a freely accessible web-book, titled *On the Line: How Schooling, Housing, and Civil Rights Shaped Hartford and its Suburbs*. This grant was the only digital humanities fellowship awarded by NEH in its 2010 competition.

"America's metropolitan history has been shaped by boundary lines," argues Dougherty. His research draws connections between real estate agents who maintained discriminatory color lines, mortgage lenders who engaged in redlining, elected officials who drew exclusionary residential zoning lines, and suburban homebuyers who shopped for more desirable public schools across attendance lines. By integrating maps into the text of this online book, Dougherty documents structural changes in the Capital region during the twentieth century, as well as first-person perspectives from "civil rights activists who fought to cross over, redraw, or erase these lines."

Midway through their one-year grant period, Michael Hower and Jack Dougherty and colleagues have publicly previewed their work-in-progress for librarians, archivists, public historians, social studies teachers, and technology specialists at UConn, Trinity, Central Connecticut State University, Hartford Public Library, Connecticut Historical Society, the Connecticut Humanities Council, and the Connecticut State Library. Also, students from public high school classrooms in Hartford have explored interactive maps in their classes and offered valuable feedback. Visitors are encouraged to visit the *On the Line* website and submit their comments online at:

OnTheLine.trincoll.edu



Associate Professor of
Education Jack Dougherty -
Trinity College

MAGIC GeoCommons Collaborative Space



MAGIC GeoCommons Space with new furniture to
promote collaboration - December 2010.

In Fall 2010, the MAGIC GeoCommons (formerly the Map Library Reading Room) was transformed thanks to funding from the University of Connecticut Libraries Planning Team. The space that was once dominated by large tables with minimal seating was transformed by the addition of new tables, chairs, and the addition of another 46-inch LCD screen.

This new space offers seating for 30 students (instead of the previous 14 seats) and the space can be reconfigured to allow for both collaboration with small and large groups. The new furniture was installed during the last week of the semester before finals and was immediately utilized by undergraduate students. Thanks to the tables being on wheels, the space can be easily reconfigured and each day students customize this space to accommodate collaborative projects.



“They look great, it’s almost like being there.” (Comment on Topographic Maps)

MAGIC User

“...thanks to you and the rest of the staff at MAGIC and CtSDC for compiling, hosting, and making available such a wealth of information!

MAGIC User

Full-quality maps in TIFF Formats

Available 24/7/365

For the past few years, users that desired to have a full-quality version of a historic map or aerial photograph had to contact us at MAGIC in order to obtain the image in TIFF format. Once a request is received at MAGIC, the image(s) would be located on our archive server and then each image would be sent to the user via a temporary link. While most requests could be fulfilled within 24 hours (Monday - Friday) the need to provide instant, on-demand access to these TIFF images was apparent from our users.

Beginning in the Summer of 2010, MAGIC began to offer users access to TIFF images for the Connecticut USGS Topographic Map Collection by adding direct links to these images on Flickr and MAGIC’s website. In addition to providing TIFF images, each of these topographic maps were georeferenced, thus further increasing the value of these maps to our users.

MAGIC intends to provide access to TIFF images of each of our digitized maps and aerial photographs. By the end of 2010, users had access TIFF images of the entire Connecticut USGS Topographic Map Collection, most of the Historical Maps Collection, and the entire 1970 Aerial Photography Collection for Connecticut.

This entire service is thanks in large part to the efforts of the University of Connecticut Libraries Information Technology Services staff as they have expanded storage space available to enable MAGIC to offer this service to our users. Additional TIFF maps and aerial photographs will be made accessible over the upcoming year so be sure to check our website: magic.lib.uconn.edu.



Connecticut State Data Center

Collaboration with MAGIC

In Fall 2010, the Center for Population Research, the University of Connecticut Department of Geography, MAGIC, and the Office of Policy and Management formed a collaboration to locate the Connecticut State Data Center at MAGIC. The Connecticut State Data Center serves as Connecticut’s contact for U.S. Census related inquiries and assists state agencies, municipalities, media, non-profits, and the general public. Dr. Jeffrey Osleeb (UConn Department of Geography Chair) serves as the principle investigator for the Connecticut State Data Center and Michael Howser (at MAGIC) coordinates the Connecticut State Data Center’s efforts, including graduate assistants that assist with data processing and inquiries. With the upcoming release of the 2010 U.S. Census data in 2011, the Connecticut State Data Center will be able to provide increased public access to data while also providing data in map-friendly formats. Check out the Connecticut State Data Center website at: ctsdc.uconn.edu



Presentations

In 2010, MAGIC provided a number of presentations to increase awareness of new products and resources available from MAGIC. True to MAGIC's collaborative mindset, several of the presentations involved multiple collaborators ranging from faculty to librarians to graduate students.

Howser, Michael. "[Interactive Meets Semantic: Implications of Web 3.0 for GIS Data & Maps](#)" on February 26, 2010 at University of Connecticut GeoSeminar Series (Storrs, CT).

Dunn, Jeffrey. "[Digital Media and Learning in Geography Panel Discussion](#)" on April 16, 2010 at Association of American Geographers (AAG) Annual Meeting (Washington, D.C.).

Dunn, Jeffrey. "[MAGIC 2.0: Using GIS to Empower K-12 Curriculum Development](#)" on April 17, 2010 at Association of American Geographers (AAG) Annual Meeting (Washington, D.C.).

Howser, Michael & Miller, Bill. "[Reference Librarians Toolkit: Maps](#)" on April 20, 2010 at 2010 Connecticut Library Association (CLA) Conference (Uncasville, CT).

Dougherty, Jack, Dunn, Jeffrey & Howser, Michael. "[Interactive Mapping for Education: Collaborations for Success](#)" on May 11, 2010 at 2010 Northeast Arc Users (NEArc) Spring Meeting (Northampton, MA).

Howser, Michael. "[Future at MAGIC](#)" on May 11, 2010 at 2010 Northeast Arc Users (NEArc) Spring Meeting (Northampton, MA).

Howser, Michael & Miller, Bill. "[About Scanning & Metadata Standards](#)" on June 3, 2010 at the North East Map Organization Annual Meeting (Portland, ME).

Howser, Michael & Miller, Bill. "[Maps and GIS Data for the 21st Century](#)" on June 8, 2010 at Fuss & O'Neill (Manchester, CT).

Dunn, Jeffrey. "BILKO Remote Sensing Open Source Software" on June 18, 2010 at the Connecticut GIS User to User Network Meeting (Waterbury, CT).

Dunn, Jeffrey & Howser, Michael. "[The 'Where' in Education: Integrating Curriculum through Spatial Thought](#)" on July 11, 2010 at the ESRI Education User Conference (San Diego, CA).

Dunn, Jeffrey. "[What is GIS](#)" on August 2, 2010 at the Connecticut Geographic Alliance Teachers Workshop (Storrs, CT).

Dougherty, Jack & Howser, Michael. "[Spatial Perspectives: On the Line](#)" National Institute for Technology in Liberal Education (NITLE) Podcast on August 9, 2010.

Avery, David. "[Augmenting the Reality of the Classroom: Integrating Location-Based Concepts Within the Curriculum](#)" on October 15, 2010 at EDUCAUSE 2010 (Anaheim, CA).

Miller, Bill. "Navigating the World through Online Map Sources" on October 15, 2010 at the Osher Lifelong Learning Institute (Waterbury, CT).

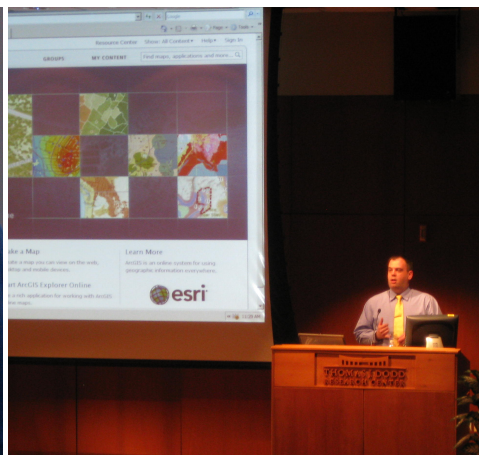
Dougherty, Jack & Howser, Michael. "On the Line Project Preview and Feedback" on October 19, 2010 at Trinity College (Hartford, CT).

Denton, Curtis, Dougherty, Jack & Howser, Michael. "[On the Line: A Preview](#)" on October 30, 2010 at the New England - Saint Lawrence Valley Geographical Society (NESTVAL) Conference (Storrs, CT).

Dougherty, Jack, Howser, Michael & Tatem, David. "[Mapping Connecticut History and Spatial Inequality with On The Line](#)" on November 17, 2010 at GIS Day 2010 (New Britain, CT).

Dougherty, Jack, Howser, Michael & Miller, Bill. "On the Line: A Preview and Feedback Session" on December 13, 2010 at the Hartford History Center (Hartford, CT).

Jeffrey Dunn presenting at the Northeast ArcUsers Spring Meeting in Holyoke, MA.



The University of Connecticut Libraries hosted the Connecticut GIS User to User Network Meeting at the Storrs Campus and Waterbury Campus during 2010.

Workshops & Publications

To meet the needs of our users, MAGIC offered multiple workshops in 2010 to encourage participants to integrate maps and geospatial data in their research and within the classroom. In addition to workshops, through a collaboration between the Connecticut Geographic Alliance and MAGIC, a series of publications were developed for the Hartford Courant that included maps created by Jeffrey Dunn, a PhD student in the UConn Department of Geography.

- Creating Custom Maps using ArcGIS
- Geo-everything - NERCOMP Workshop
- Georeferencing Maps - Basics
- Geotagging: Putting Your Photos on a Map
- Google Earth - Basics
- Google Maps - Basics
- Google Maps Mash-ups - Basics
- Google Maps Mash-ups - Advanced
- Incorporating Maps within a Presentation
- Making Maps Online
- Transforming Data into Maps



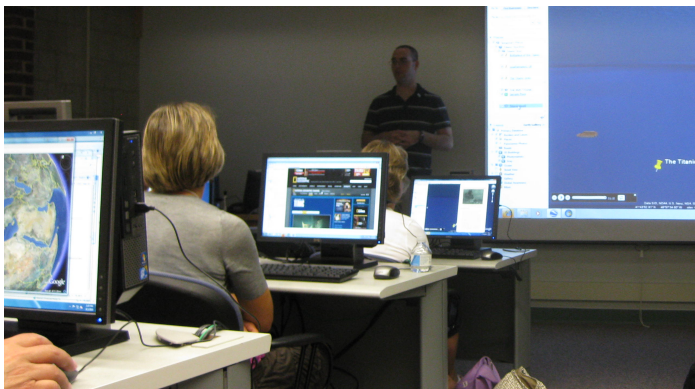
Geo-everything: Map Mash-ups, Geotagging, and Interactive Learning - January 22, 2010

Alex Chaucer (Skidmore College), Michael Howser (UConn), and Stacey Maples (Yale U)

CT Teachers Workshop August 2, 2010

Collaborations are key to the ongoing success at MAGIC. In 2010, the Connecticut Geographic Alliance and MAGIC developed a one-day interactive workshop for Connecticut's K-12 teachers to explore maps and geospatial data to incorporate within the classroom. This workshop provided teachers with an opportunity to explore Google Earth,

Google Maps, and multiple online map resources to provide students with engaging interactive resources that can strengthen geo-literacy skill development.



CT Teachers Workshop - August 2, 2010 - Presenters Jeffrey Dunn and Jack Dougherty

This workshop featured presentations by Jeffrey Dunn, PhD student in the UConn Department of Geography, and Jack Dougherty, Associate Professor of Educational Studies at Trinity College. Participants received continuing education units (CEUs) and participants developed potential plans for integrating the information from the workshop into the classroom.

Special thanks to the Connecticut Geographic Alliance for promoting this workshop and to the UConn Libraries for sponsoring lunch for the participants.

Publications

Dunn, Jeffrey J. Cartographer for [Hartford Courant News In Education](#) "Geography Is On The Map" Series

- September 24, 2010 "Gulf Oil Spill"
- October 8, 2010 "Food Exchange"
- October 22, 2010 "[Connecticut Watershed](#)"
- December 10, 2010 "Ring of Fire"

Howser, Michael CT [User-to-User Network Update: GIS Education and Training Opportunities](#), in Connecticut Geo-Focus (Winter 2010).

MAGIC Staff

Driven to Excel

The students and staff at MAGIC are the critical to the continuous success and ongoing improvement of MAGIC. In 2010, MAGIC had three major grant projects in development to enhance the number of GIS and map offerings available via MAGIC's website.

During 2010, MAGIC began a collaborative NEH Grant project with Trinity College's Jack Dougherty which has included students at MAGIC, Dr. Benjamin Spaulding (former MAGIC graduate student), and colleagues from throughout the state of Connecticut. This collaborative grant has expanded the number of collaborative projects and initiatives that MAGIC is involved in and has increased the energy at MAGIC to expand access to maps and geospatial data for public use.

The following individuals enabled 2010 a great year at MAGIC!

Graduate Student Staff

George Bentley
Curtis Denton
Jeff Dunn
Jie Lin
Cary Lynch
Jon Pollak

MAGIC Collaborators

Dr. Jeffrey Osleeb
Dr. Thomas Cooke

MAGIC Staff

Bill Miller
Michael Howser

NEH Fellow @ MAGIC

Jack Dougherty

Undergraduate Student Staff

Tom Bachant
Joel Cintron
Steven Daniels
Tia Hogan
Anna Kuziara
Chelsea Leiper
Doug Sands
Joshua Strunk



"Thanks for all that you do to make geography come alive."

- MAGIC User

"You guys at MAGIC are the best. Keep up the good work."

- MAGIC User



MAGIC Internship Participants

Joshua Strunk and Chelsea Leiper were the first undergraduate geography students to participate in the MAGIC Internship for Credit program during

MAGIC Internships

An Undergraduate Experience

The MAGIC internship program offers undergraduate students in the University of Connecticut Libraries Map and Geographic Information Center - MAGIC. The internship experience at MAGIC is designed to provide students with an opportunity to enhance their geospatial skills and a customized project is developed based on each participants interests. This program began in January 2010 with Chelsea Leiper and Joshua Strunk being the first undergraduate students to participate in the program. Chelsea's internship focused on digitizing and georeferencing historical maps from MAGIC's collections. Joshua's internship focused on developing geospatial datasets as well as developing FGDC metadata for each dataset.

Each project results in additional datasets and maps which are then made available to the public via the MAGIC website (magic.lib.uconn.edu). Special thanks to Dr. Jeffrey Osleeb, Dr. Robert Cromley, and Dr. Anji Seth for supporting the MAGIC internship program and we look forward to providing additional internship experiences!

Want to know the latest from MAGIC?

Follow us!

The University of Connecticut Libraries Map and Geographic Information Center - MAGIC continues to expand our online offerings of maps and geospatial data. To keep current on the latest news, resources, and offerings follow MAGIC on [Twitter](#), become a fan of MAGIC on [Facebook](#), and view our Blog at outsidetheneatline.blogspot.com



Blog



Facebook



RSS



Twitter



1898 Yellowstone National Park Map

This map is was produced by the Northern Pacific Railway to promote visiting Yellowstone National Park by rail.



MAP & GEOGRAPHIC INFORMATION CENTER - MAGIC

University of Connecticut Libraries

369 Fairfield Road U 2005M

Storrs, CT 06269-2005