



University of
Connecticut

University Libraries

MAP AND GEOGRAPHIC INFORMATION CENTER

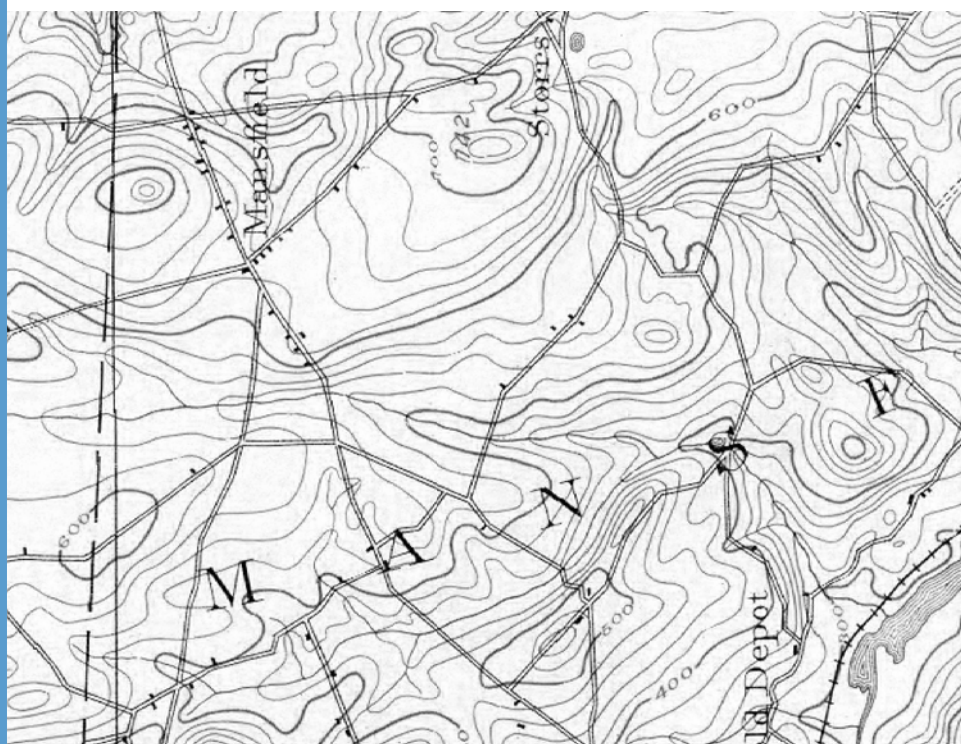


ANNUAL REPORT

Digitizing the Past to Empower 21st Century Research

Our Mission

The University of Connecticut Libraries' Map and Geographic Information Center (MAGIC) collaborates with university departments and state agencies, and organizations to provide the citizens of the state of Connecticut and researchers across the globe with access to Connecticut focused geographic information. With a focus on providing access to maps, geographic data and resources MAGIC is committed to "Digitizing the Past to Empower 21st Century Research" through providing online access to Connecticut geographic data via the world wide web with tools and resources which enable anyone to explore our data and maps.



Digitizing the Past to Empower 21st Century Research

Talent @ MAGIC

Developing research resources for the 21st century requires a talented, innovative and enthusiastic workforce. Below are the wizards which make MAGIC happen @ UConn.

MAGIC Leaders

William (Bill) Miller — Map Library Manager

- ▶ Cataloging
- ▶ Student Worker Management
- ▶ Print & Online Collection Support

Michael Howser — Undergraduate Education/GIS Librarian

- ▶ Geospatial research support
- ▶ Curriculum development for Geospatial Literacy
- ▶ Digitization and Collection Development

Sarah Stanwicks — Map Librarian (departed January 2008)

- ▶ Geospatial research support
- ▶ Print and Digital Collection support

Digitization Specialists

Benjamin Spalding

- ▶ Website Development & Updating
- ▶ MAGIC 2.0 core developer

Brandon Cramer

- ▶ Digitization and Georeferencing

Jeff Dunn

- ▶ Curriculum Development for Geospatial Literacy
- ▶ Digitization and Georeferencing

Dean Chauvin (departed June 2008)

- ▶ Python Scripting
- ▶ Digitization and Georeferencing

Digitization and Print Collection Support

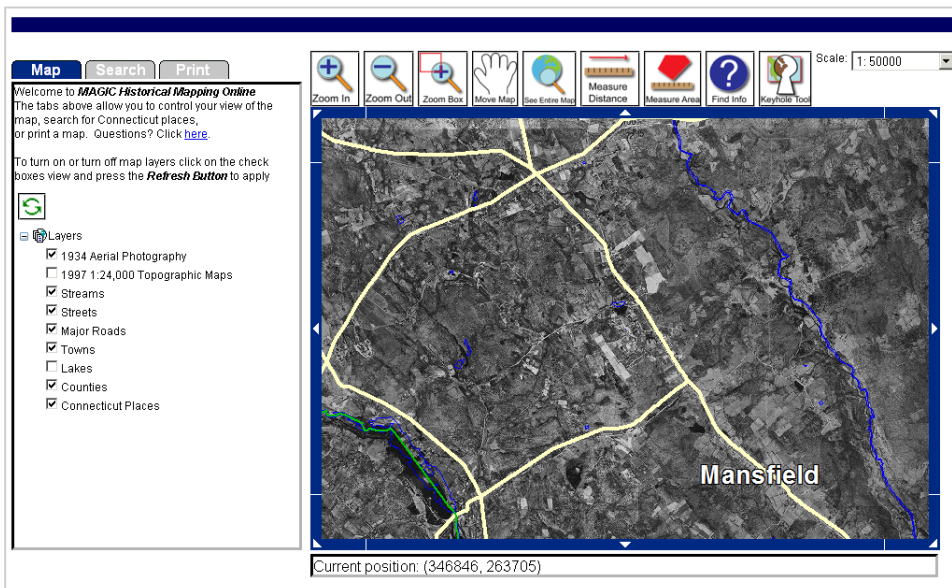
Brienne Boss , Devin Paige, Diana Deng, Kate Miller

- ▶ Digitization
- ▶ Georeferencing
- ▶ Collection Maintenance
- ▶ Geospatial User Research

MAGIC 2.0

Summer 2008 marked a turning point for the Map and Geographic Information Center (MAGIC) began with the implementation of CADCorp online geospatial data viewer. This online viewer symbolizes the new direction for MAGIC where geospatial tools and resources are accessible are easy to use, and visually based, thus explaining this new viewer symbolizes MAGIC 2.0. The online viewer enables anyone to view and explore data, search for a particular town, and create a customized .pdf map. In the near future visitors to the MAGIC website will be able to add their own data to a map and even utilize our data directly utilizing a web mapping service (WMS).

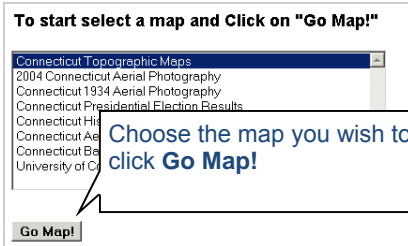
To explore MAGIC 2.0 visit:
<http://magic.lib.uconn.edu>



The future of MAGIC

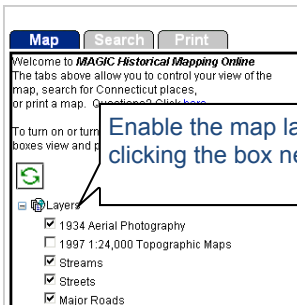
Mapping in 4 Steps!

1



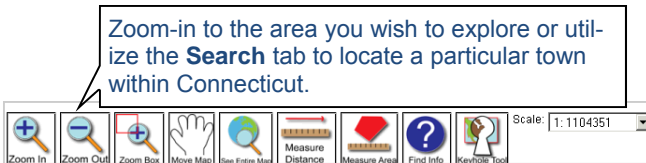
Choose the map you wish to view and then click **Go Map!**

2



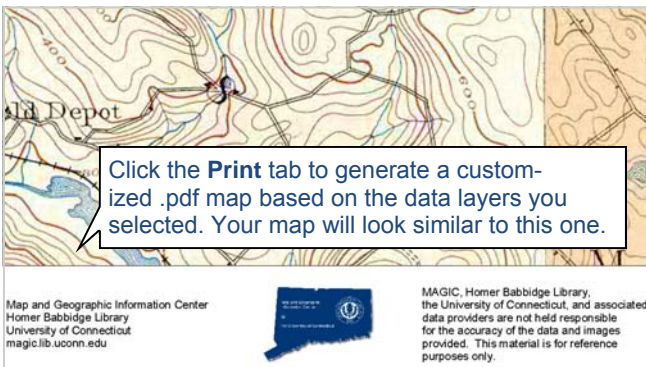
Enable the map layers you wish to view by clicking the box next to each layer.

3



Zoom-in to the area you wish to explore or utilize the **Search** tab to locate a particular town within Connecticut.

4



Click the **Print** tab to generate a customized .pdf map based on the data layers you selected. Your map will look similar to this one.

Additional features and data are being added so be sure to check back often!

Presentations

Spalding, Benjamin. "MAGIC 2.0: The Development of Web-Based GIS Applications for Historical GIS Data" on October 31, 2008 at the New England - Saint Lawrence Valley Geographical Society 2008 Annual Meeting (Plymouth, New Hampshire).

Spalding, Benjamin. "Recent Developments at MAGIC: Incorporating Open GIS Standards into Online Mapping Tools" on November 19, 2008 at Connecticut GIS Day at Southern Connecticut State University (New Haven, CT).

Howser, Michael. "MAGIC 2.0 Overview" on December 11, 2008 at Connecticut Demographics Studies Advisory Committee at UConn Greater Hartford Campus (West Hartford, CT).

Publications

Chauvin, D. (2008). *A digital archive of historical railroad property valuation maps*. UCCGIA papers and proceedings, no. 5. Storrs, CT: University of Connecticut, Center for Geographic Information and Analysis. http://digitalcommons.uconn.edu/uccgia_papers/5/.

Spaulding, B. D., Stanwicks, S. (2007). *Developing a geographic information system index for historical aerial photographs*. UCCGIA papers and proceedings, no. 3. Storrs, CT: University of Connecticut, Center for Geographic Information and Analysis. http://digitalcommons.uconn.edu/uccgia_papers/3/



Digitization Projects

2004 Aerial Photographs of Connecticut

In Fall 2008, the 2004 aerial photographs for the entire state of Connecticut were added to the online map viewer.

Connecticut Topographic Maps

Georectification of the USGS topographic maps for the state of Connecticut is nearing completion. This digitization project will enable users to explore all USGS topographic Maps via the online map viewer.

1990 Aerial Photographs of Connecticut

Scanning of the 9" by 9" aerial photographs from 1990 is over 50% complete and upon completion these images will be added to the online map viewer.

1915 New Haven Railroad Valuation Maps

New Haven Railroad valuation maps for areas within Connecticut have been scanned and uploaded for researchers to access at <http://images.lib.uconn.edu/>. This project, in collaboration with the Thomas J. Dodd Research Center, Collection Services, and Preservation Departments within the UConn Libraries, will begin digitizing maps for areas which extend into Rhode Island, Massachusetts, and New York.

1906 Connecticut Geology Maps

Digitization of the Geological and Natural History Survey maps for the state of Connecticut are nearing completion. This digitization project is in collaboration with the Connecticut Department of Environmental Protection (DEP) and will be accessible via the MAGIC website.

Additional Digitization Projects

- 1980 Aerial Photographs of the Housatonic River
- 1986 Aerial Photographs of the Connecticut Coast



2008 Quick Facts

Aerial Photos Scanned: 2,193

MAGIC 2.0 Visitors: 5,611*

Research Inquiries: 407

Maps Scanned: 3,013

MAGIC Website Visitors: 28,584*

*partial year data

CALL FOR COLLABORATORS

MAGIC is always in search of additional partners and collaborators to provide access to data sets pertaining to the state of Connecticut. Whether you are looking for collaborators on a geospatial data project or looking for opportunities to share your data with the public, MAGIC is willing to meet and discuss areas for potential collaboration. Send us an email at magic@uconn.edu or stop by or give us a call at (860) 486-4589 to discuss your research needs.